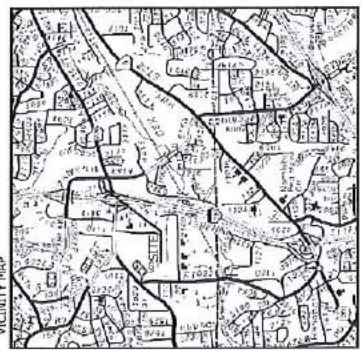
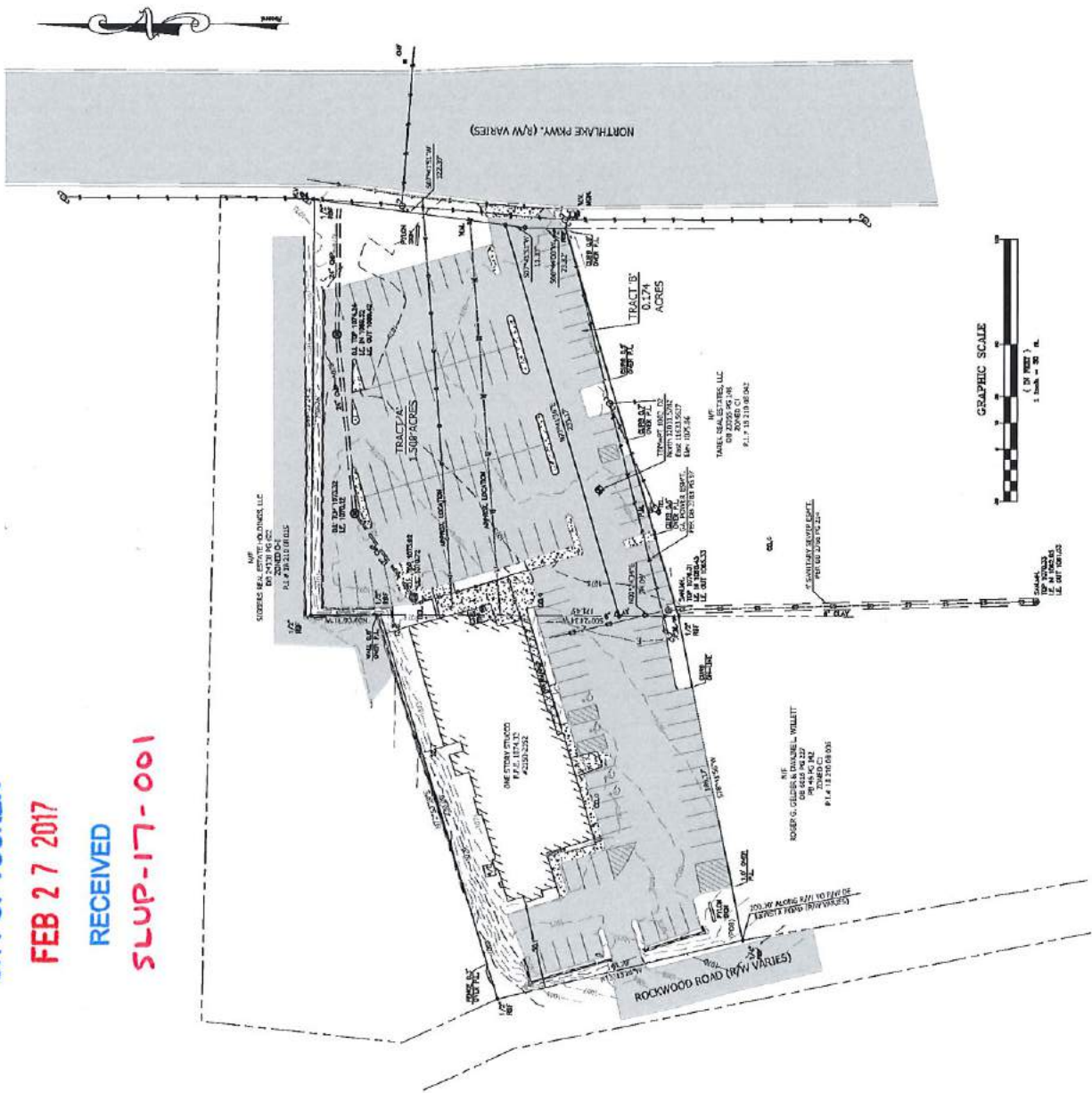


CITY OF TUCKER
FEB 27 2017
RECEIVED
SLUP-17-001



SYMBOL LEGEND

1/4" PIN FOUND	1/4" PIN FOUND
1/4" PIN SET	1/4" PIN SET
UTILITY POLE	UTILITY POLE
LIGHT POLE	LIGHT POLE
PIPE PROCAST	PIPE PROCAST
WATER LINE	WATER LINE
SANITARY SEWER LINE	SANITARY SEWER LINE
STRECH SEWER LINE	STRECH SEWER LINE
RETAINING WALL	RETAINING WALL
OPENING POWER LINE	OPENING POWER LINE
PROPERTY LINE	PROPERTY LINE
ADJACENT LOT LINE	ADJACENT LOT LINE
ASPHALT AREA	ASPHALT AREA
CONCRETE AREA	CONCRETE AREA



LOCAL JURISDICTION
 The official, as shown on the plat, is located in the City of Tucker, Georgia, within the jurisdiction of the City of Tucker, Georgia, and is subject to the laws and ordinances of the City of Tucker, Georgia, and the State of Georgia.

PERMITS & NOTICES
 The project is subject to the laws and ordinances of the City of Tucker, Georgia, and the State of Georgia, and is subject to the laws and ordinances of the City of Tucker, Georgia, and the State of Georgia.

CONTRACT INFORMATION
 The project is subject to the laws and ordinances of the City of Tucker, Georgia, and the State of Georgia, and is subject to the laws and ordinances of the City of Tucker, Georgia, and the State of Georgia.

LEGAL DESCRIPTION
 The project is subject to the laws and ordinances of the City of Tucker, Georgia, and the State of Georgia, and is subject to the laws and ordinances of the City of Tucker, Georgia, and the State of Georgia.

ADDITIONAL INFORMATION
 The project is subject to the laws and ordinances of the City of Tucker, Georgia, and the State of Georgia, and is subject to the laws and ordinances of the City of Tucker, Georgia, and the State of Georgia.

DISCLAIMER
 The project is subject to the laws and ordinances of the City of Tucker, Georgia, and the State of Georgia, and is subject to the laws and ordinances of the City of Tucker, Georgia, and the State of Georgia.

NOTICE
 The project is subject to the laws and ordinances of the City of Tucker, Georgia, and the State of Georgia, and is subject to the laws and ordinances of the City of Tucker, Georgia, and the State of Georgia.

This survey was prepared in accordance with the professional standards of the Georgia Board of Professional Surveyors and Land Surveyors as set forth in the Georgia Professional Code of Ethics (GPECE).

CITY OF TUCKER

FEB 27 2017

RECEIVED

SLUP-17-001



South Elevation



Northlake Elevation

concept renderings

02.27.2017



Northlake Senior Apartments | Tucker, Georgia

SGstudio_miami, llc. 600 Brickell Ave. # 1600, Miami, FL 33131