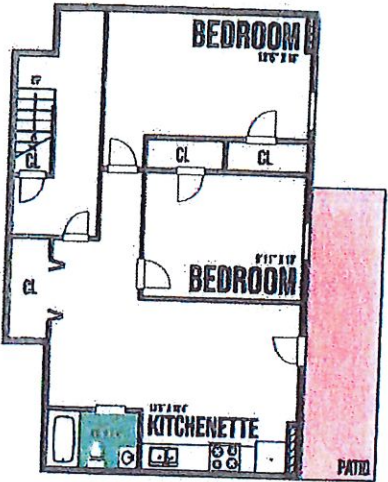
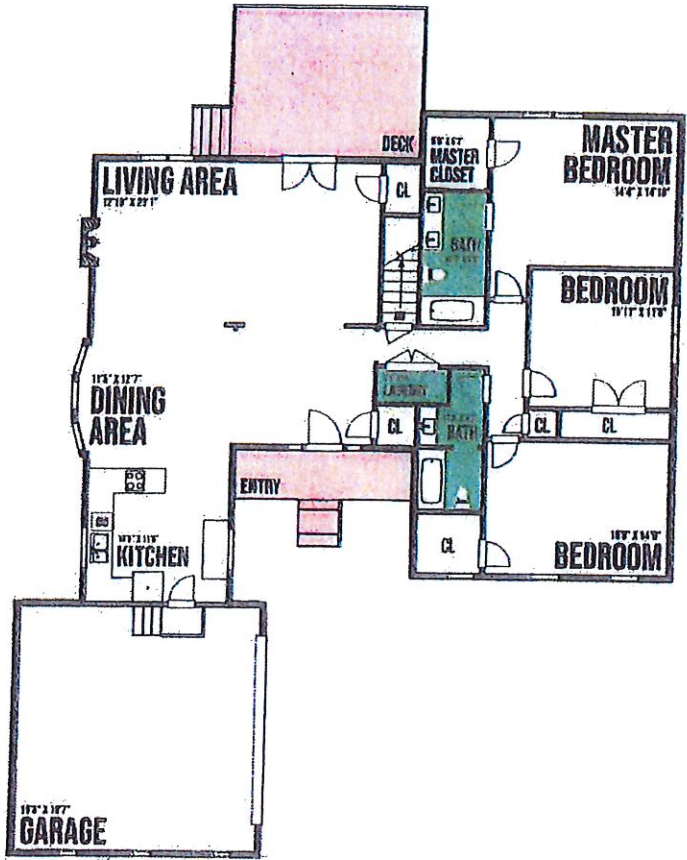


- LOWER LEVEL

3710 S MARLBOROUGH DR - MAIN FLOOR



Layout of house with walls
and doors.
No proposed changes to
interior.

RECEIVED
City of Tucker

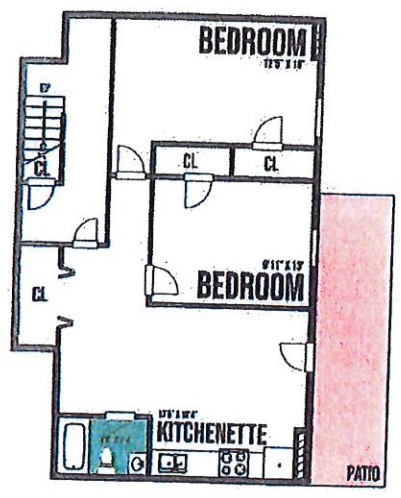
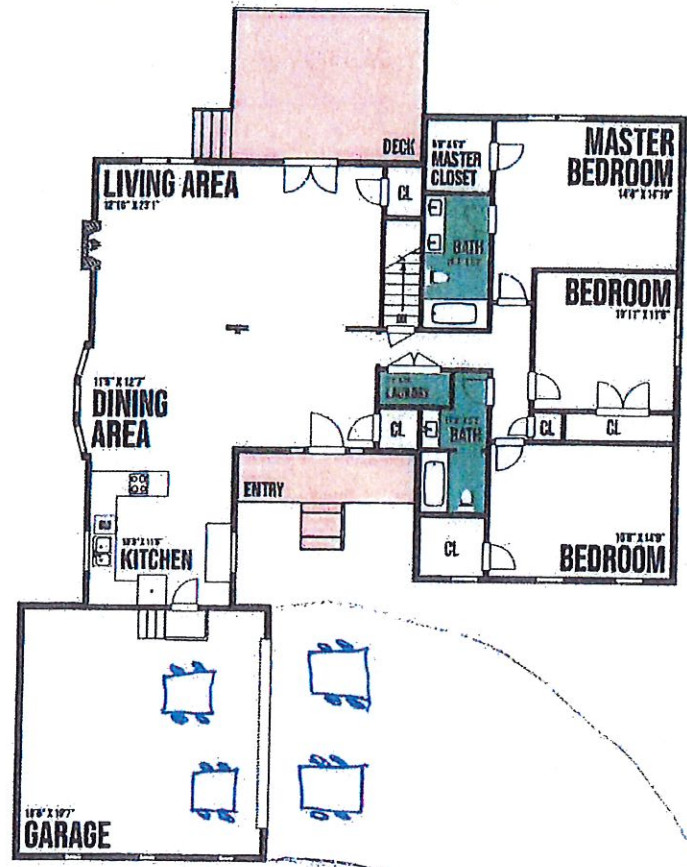
JUN 29 2021

Community Development
Department

SLUP-21-0003

- LOWER LEVEL

3710 S MARLBOROUGH DR - MAIN FLOOR



2 car garage with
additional spots
in driveway

S. Marlborough Drive

RECEIVED
City of Tucker

JUN 29 2021

Community Development
Department

SLUP-21-0003



3710 S. Marlborough Drive

Tucker, GA 30084

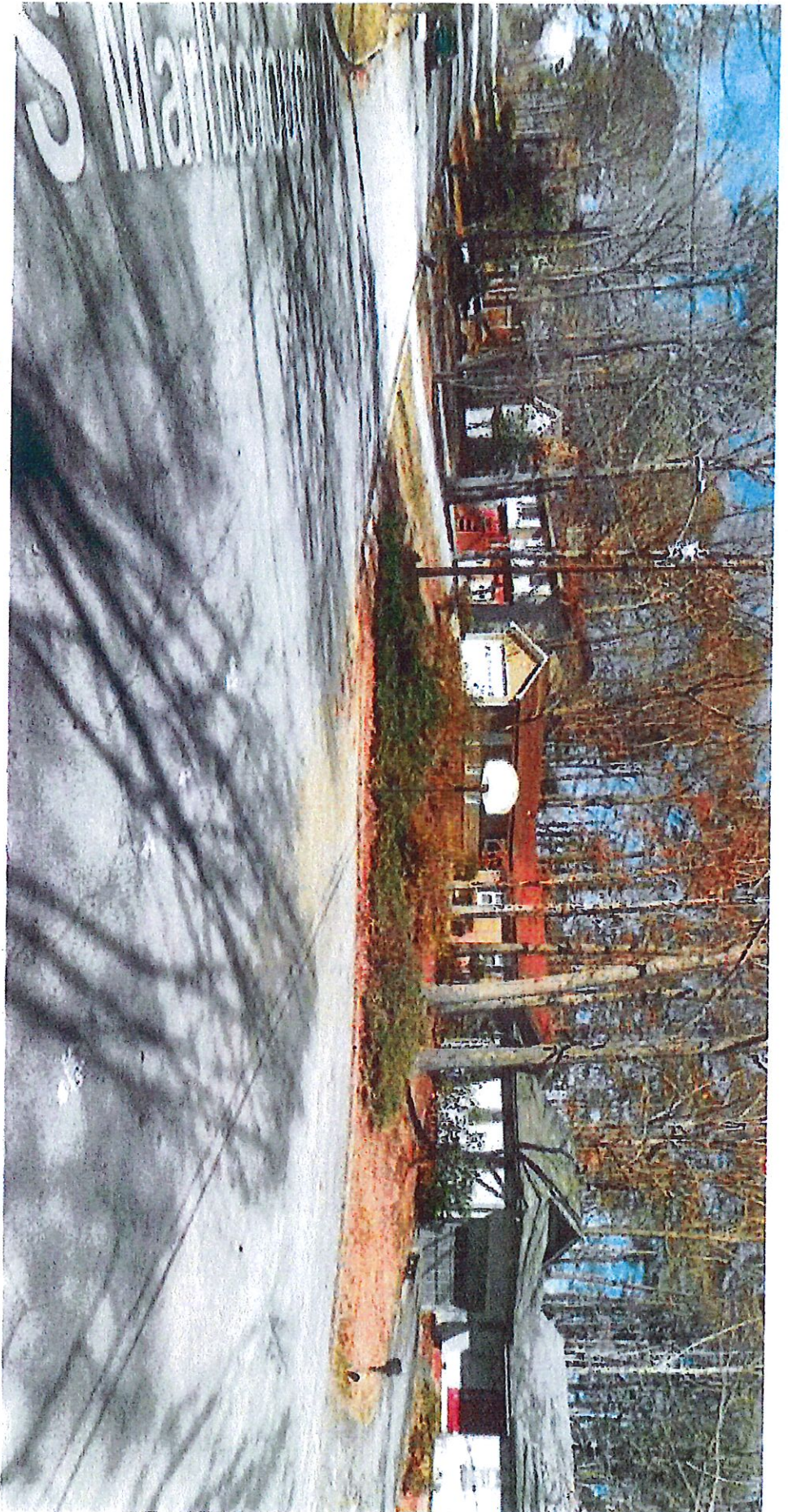
- Building Elevators - Single Story with basement
- Driveway showing parking spaces
- Details county water and sewer

RECEIVED
City of Tucker

JUN 29 2021

Community Development
Department

2111D-21-7203



3710 S. Marlborough Drive, Tucker, GA

- Speed limit is 15 mph
- Power lines showing

RECEIVED
City of Tucker

JUN 29 2021

Community Development
Department

SLUP-21-0003