



LAKE ERIN DAM

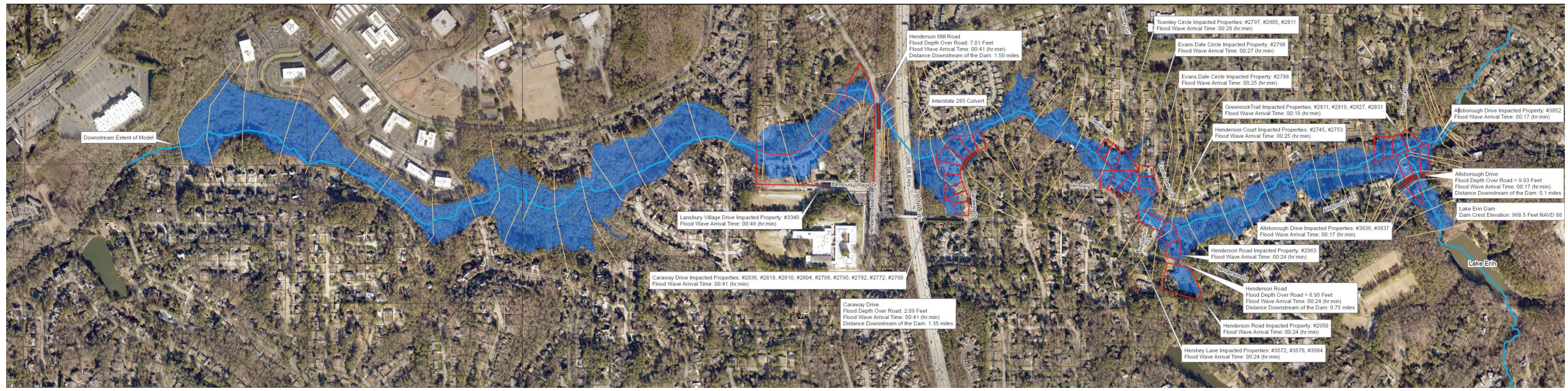
PUBLIC INFORMATION MEETING

JANUARY 16, 2025

BACKGROUND

- Lake Erin Dam is rated as a Category 1 Dam due to height, drainage basin, and potential loss of life
- Inspection reports dating back to at least 2010 shows years of **deferred maintenance**
- Deficiencies include vegetation on the dam, seepage, blocked outlet structure, insufficient spillway design, and potential overtopping of the dam
- Georgia EPD issued a Notice of Violation to DeKalb County in September of 2020 citing that the dam is in “poor condition”
- City took over maintenance responsibility in early 2024
- City Council and DeKalb BOC approved an IGA giving the City maintenance responsibility; County contributed \$1.4 M of ARPA funds toward construction





LAKE ERIN DAM BREACH INUNDATION LIMITS



Outlet Control Structure



Vegetation on Slope of Dam



Emergency Spillway



Downstream Outlet Pipe

DESIGN AND PERMITTING

- City contracted with AECOM due to past knowledge of the dam including survey, inspections, hydraulic studies, and alternatives analysis

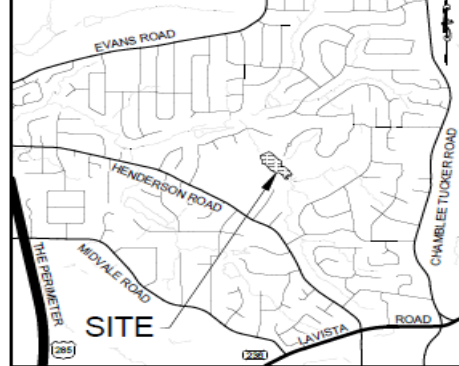
DESIGN INCLUDES:

- Structural design of new dam
- New outlet structure and spillway
- Current normal pool elevation to be maintained
- Plans, details and specifications for construction documents
- Coordination and permitting with EPD Safe Dams and the US Army Corps of Engineers

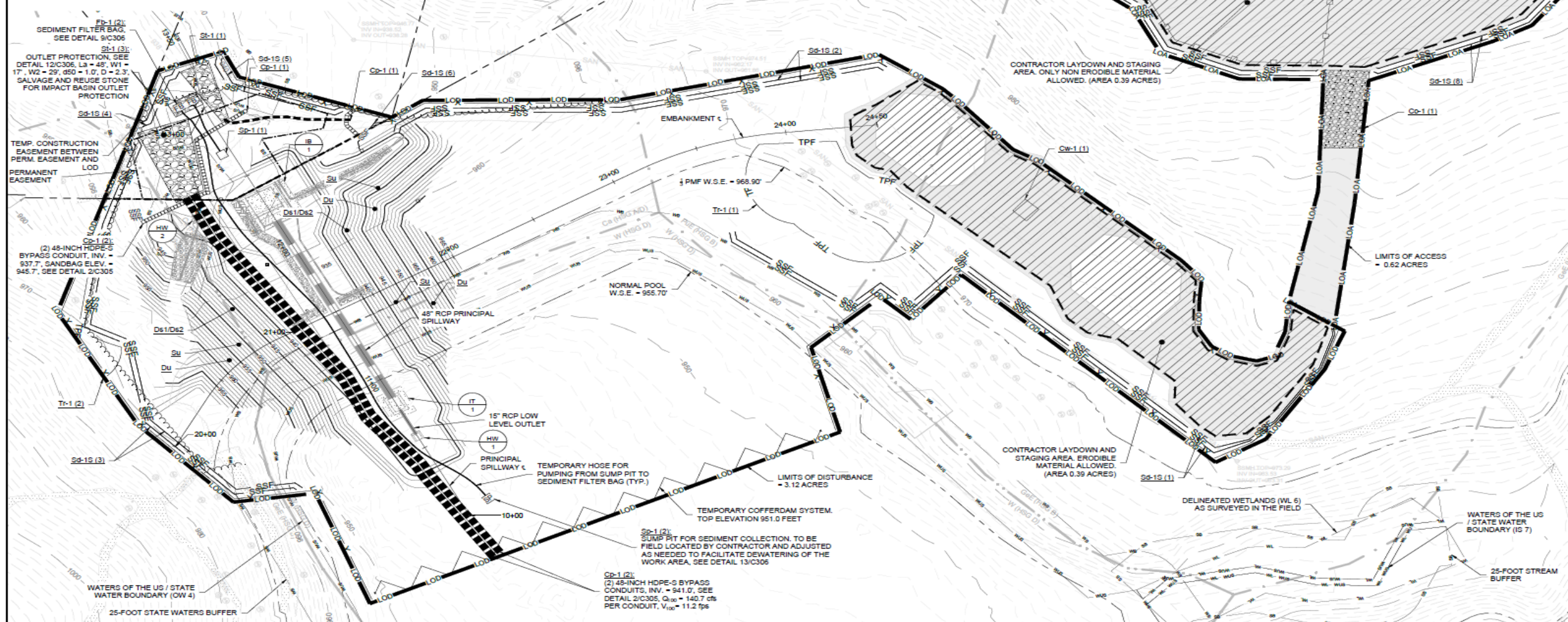
CONSTRUCTION

- Installation of sediment control measures
- Demolition of existing dam, spillway, outlet structure, etc.
- Installation of new outlet control structure and piping
- Grade and compact new dam to structural specifications
- Construct impact basin immediately downstream of dam
- Install piezometers for future monitoring of groundwater seepage
- Aggregate trail along top of dam
- Restoration of site

Construction Limits of Disturbance



VICINITY MAP
Scale: 1" = 2000'



Henderson Park



Trail Closure

Area Closed During Construction

Trail Closure

Trail Closure

Trail Information

- Red Trail Access
- White Trail Access
- Blue Trail Access
- Yellow Trail Access
- Red Trail
- White Trail
- Blue Trail
- Yellow Trail

Amenities

- Fields
- Dog Park
- Tennis
- Restrooms
- Playground
- Scenic View

Native Plant and Wildlife Walk and Community Garden

- Community Garden
- Native Plant and Wildlife Walk
- Native Plant and Wildlife Walk Trail
- Parking
- Information

FUNDING

\$1.4 M - DeKalb County ARPA funds

\$2.6 M - City Capital Budget

\$4.0 M - Total Budget

EXPENSES

Bid Award to JG Leone - \$2,571,450

Easement Acquisition - \$30,000

Construction Engineering & Inspections – TBD

NEXT STEPS

- Award construction bid
- Public Information Meeting
- AECOM to submit proposal for Construction Engineering & Inspections and Ecology recommendations
- Parks to remove existing playground
- Block off vehicular and pedestrian access to the construction site
- Contractor mobilization in March
- Siphon lake water
- Remove two-thirds of dam, diverting the water flow
- Playground area to be used for temporary soil stockpile
- Reconstruct dam, install piping and outlet structure
- Approximately 6 - 8 months to complete (weather dependent)