

CITY OF TUCKER

ACKNOWLEDGE RECEIPT OF ADDENDUM #1

ITB 2025-004

ROAD AND CURB DRAINAGE REPAIRS

Please print this page and add to your submittal.

I hereby acknowledge receipt of the supplement pertaining to the above referenced bid.

COMPANY NAME: _____

CONTACT PERSON: _____

ADDRESS: _____

CITY: _____ STATE: _____ ZIP: _____

PHONE: _____ FAX: _____

EMAIL ADDRESS: _____

SIGNATURE DATE

ITB 2025-004
ADDENDUM #1

This addendum contains twelve (12) additional photos drawings and specifications as part of the scope of work.

TASK ORDER 30, LOCATION 1 2109 LAVISTA EXECUTIVE PARK DR

END REMOVE AND REPLACE
24" CURB AND GUTTER,
MATCH EXISTING
ELEVATION, 115 FEET FROM
BEGINNING

REMOVE AND
REPLACE 24"
CURB AND
SPILL
GUTTER, 4"
INCHES
HIGHER
THAN
EXISTING
ELEVATION,
92 LF FROM
BEGINNING

REMOVE AND
REPLACE 24"
CURB AND
SPILL
GUTTER, 8"
INCHES
HIGHER
THAN
EXISTING
ELEVATION,
72 LF FROM
BEGINNING

REMOVE AND
REPLACE 24"
CURB AND
GUTTER, 9"
INCHES
HIGHER
THAN
EXISTING
ELEVATION,
54 LF FROM
BEGINNING

REMOVE AND REPLACE 24"
CURB AND GUTTER, 7"
INCHES HIGHER THAN
EXISTING ELEVATION, 38 LF
FROM BEGINNING

REMOVE AND REPLACE 24"
CURB AND GUTTER, 2"
INCHES HIGHER THAN
EXISTING ELEVATION, 22 LF
FROM BEGINNING

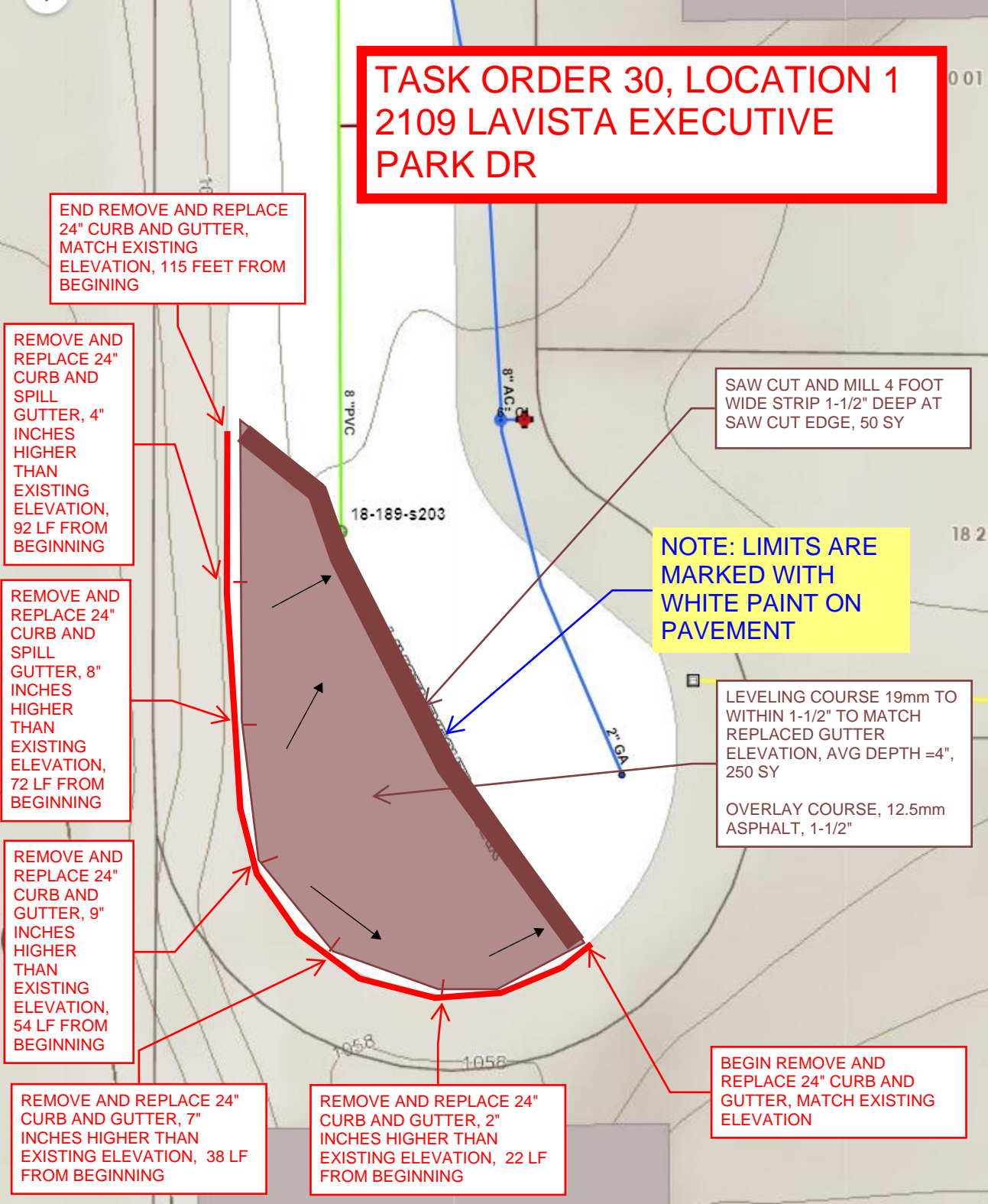
SAW CUT AND MILL 4 FOOT
WIDE STRIP 1-1/2" DEEP AT
SAW CUT EDGE, 50 SY

NOTE: LIMITS ARE
MARKED WITH
WHITE PAINT ON
PAVEMENT

LEVELING COURSE 19mm TO
WITHIN 1-1/2" TO MATCH
REPLACED GUTTER
ELEVATION, AVG DEPTH =4",
250 SY

OVERLAY COURSE, 12.5mm
ASPHALT, 1-1/2"

BEGIN REMOVE AND
REPLACE 24" CURB AND
GUTTER, MATCH EXISTING
ELEVATION



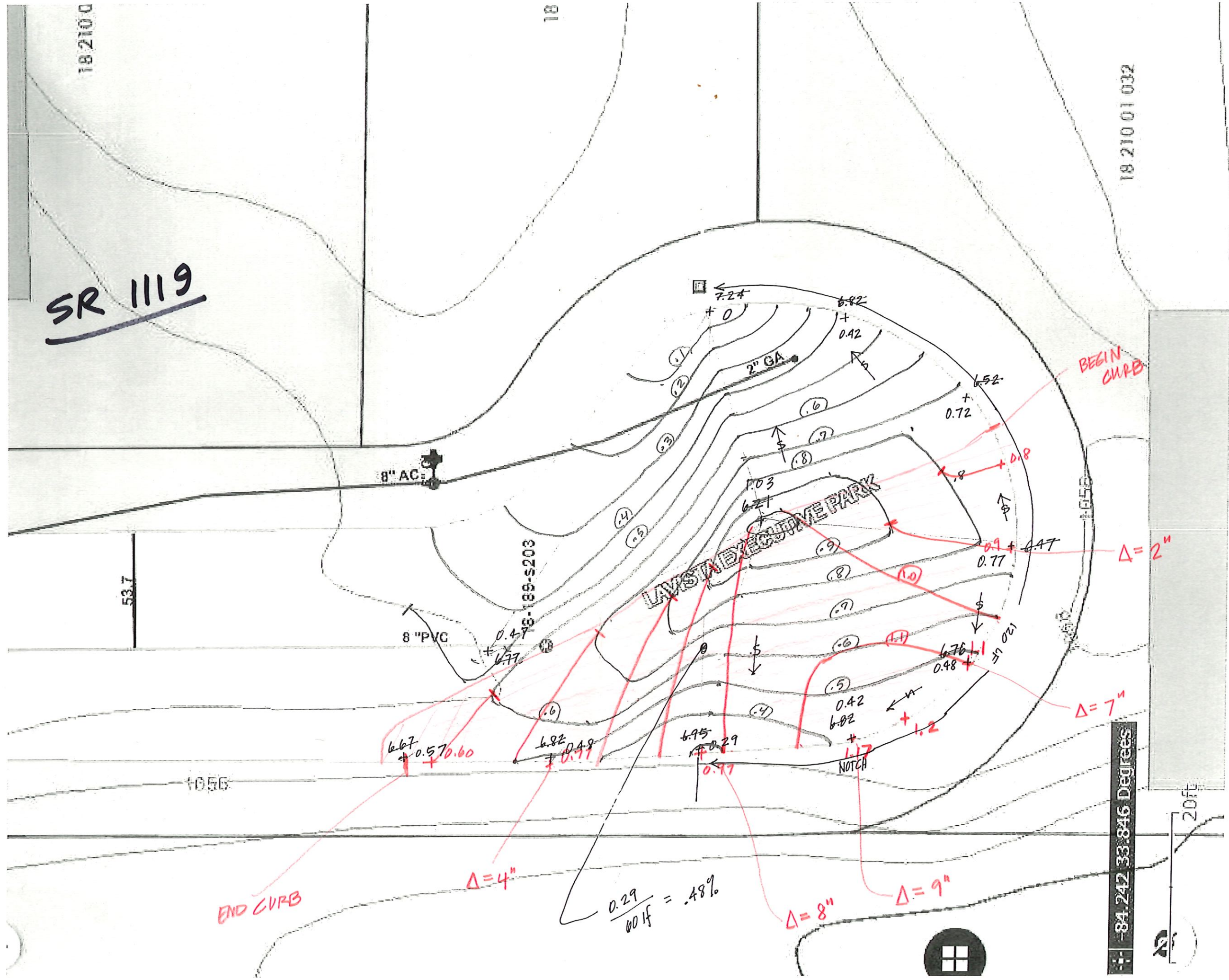


SR 1119

18 210 0

18

18 210 01 032



END CURB

$\Delta = 4''$

$$\frac{0.29}{60.14} = .48\%$$

$\Delta = 8''$

$\Delta = 9''$

BEGIN CURB

$\Delta = 2''$

$\Delta = 7''$

84.242 33.846 Degrees

20ft



18 187 01 179



18-187-s026

LINE OF 0% CROSS SLOPE

BEGIN REMOVE AND REPLACE 24" CURB AND SPILL GUTTER, MATCH EXISTING ELEVATION

REMOVE AND REPLACE 24" CURB AND SPILL GUTTER, 6" INCHES HIGHER THAN EXISTING ELEVATION, 14 LF FROM BEGINNING

REMOVE AND REPLACE 24" CURB AND SPILL GUTTER, 7" INCHES HIGHER THAN EXISTING ELEVATION, 36 LF FROM BEGINNING

BACKFILL BEHIND CURB AS NECESSARY ~ 4 CY

REMOVE AND REPLACE 24" CURB AND SPILL GUTTER, 6" INCHES HIGHER THAN EXISTING ELEVATION, 48 LF FROM BEGINNING

REMOVE AND REPLACE 24" CURB AND SPILL GUTTER, 6" INCHES HIGHER THAN EXISTING ELEVATION, 68 LF FROM BEGINNING

BEGIN REMOVE AND REPLACE WITH 24" CURB AND SPILL GUTTER, MATCH EXISTING ELEVATION, 80 LF FROM BEGINNING

LINE OF 0% CROSS SLOPE

SAW CUT AND MILL 4 FOOT WIDE STRIP 1-1/2" DEEP AT SAW CUT EDGE, 70 SY

18 187 01 180

LEVELING COURSE 19mm TO WITHIN 1-1/2" TO MATCH REPLACED GUTTER ELEVATION, AVG DEPTH =3", 160 SY

OVERLAY COURSE, 9.5mm ASPHALT, 1-1/2"

18 187 01 181

NOTE: LIMITS ARE MARKED WITH WHITE PAINT ON PAVEMENT

18-187-s025

**TASK ORDER 30, LOCATION 2
2115 CARTHAGE RD**

18 187 01 182
-84.229 33.842 Degrees

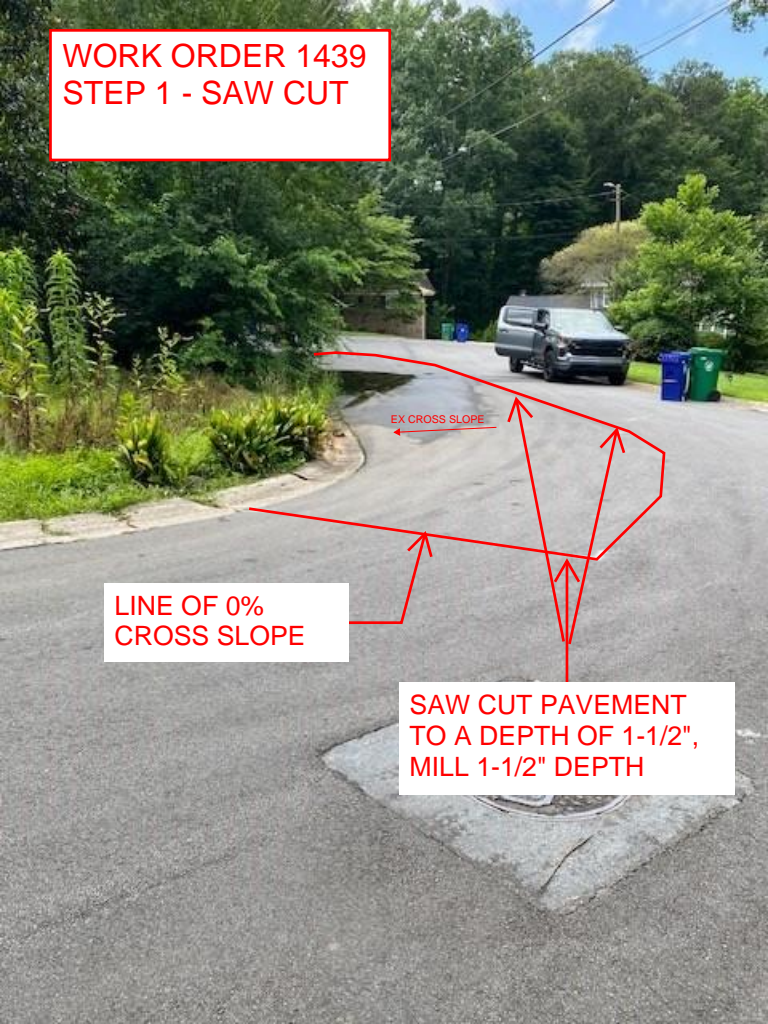


WORK ORDER 1439
STEP 1 - SAW CUT

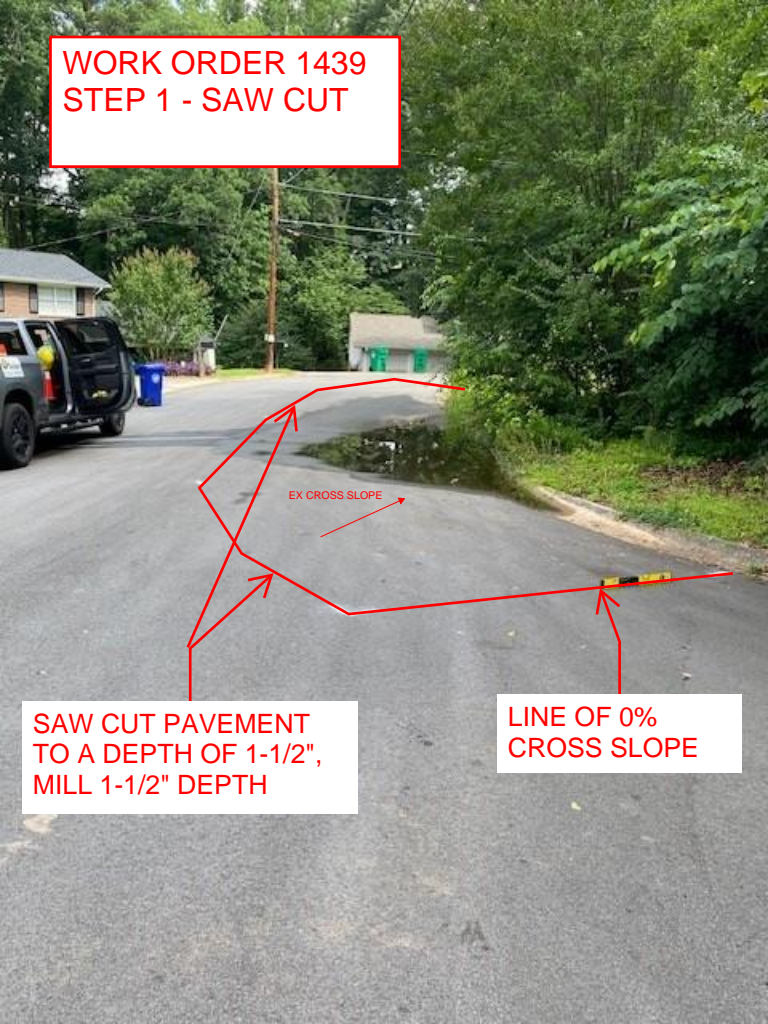
EX CROSS SLOPE

**LINE OF 0%
CROSS SLOPE**

**SAW CUT PAVEMENT
TO A DEPTH OF 1-1/2",
MILL 1-1/2" DEPTH**



**WORK ORDER 1439
STEP 1 - SAW CUT**



EX CROSS SLOPE

**SAW CUT PAVEMENT
TO A DEPTH OF 1-1/2",
MILL 1-1/2" DEPTH**

**LINE OF 0%
CROSS SLOPE**

**WORK ORDER 1439
STEP 2 -REMOVE EXISTING CURB AND
REPLACE WITH SPILL CURB**

BEGIN NEW CURB, REMOVE
AND REPLACE -MATCH
EXISTING ELEVATION.

END NEW CURB, REMOVE AND
REPLACE -MATCH EXISTING
ELEVATION.

CONTINUOUS SLOPE OF
GUTTER LINE FROM END TO
THE POINT WHICH IS 6 INCHES
HIGHER THAN EXSITING
ELEVATION.

CONTINUOUS SLOPE OF
GUTTER LINE FROM END TO
THE POINT WHICH IS 6 INCHES
HIGHER THAN EXSITING
ELEVATION.

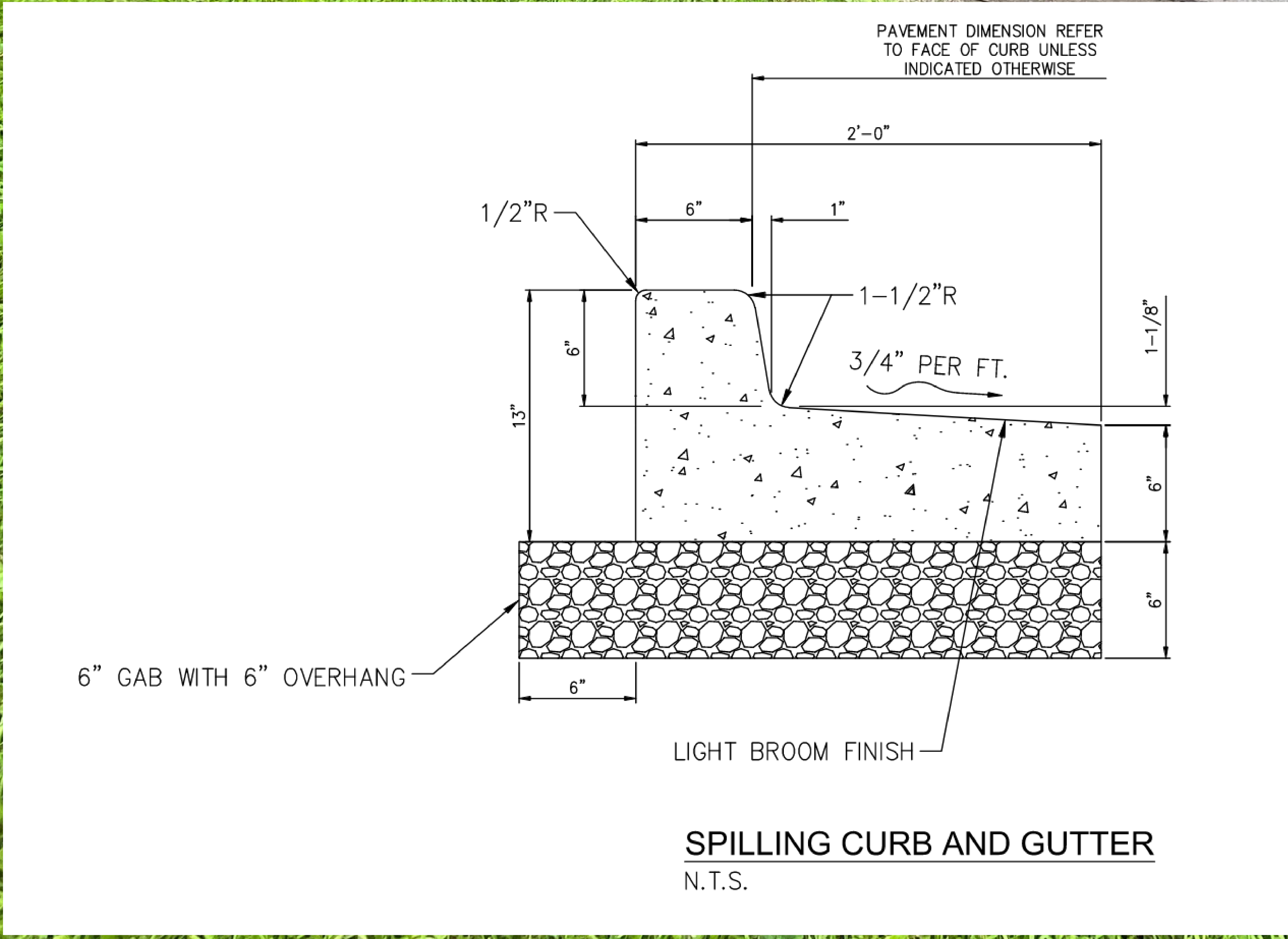
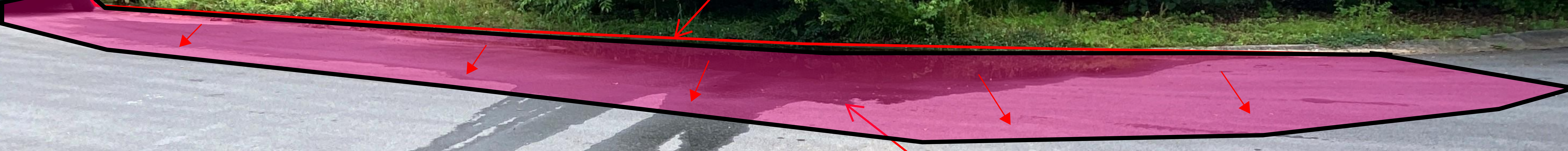
AT THIS POINT, NEW CURB TO
BE 6 INCHES HIGHER THAN
EXSITING ELEVATION.



WORK ORDER 1439
STEP 3 - PLACE OVERLAY

INSTALLED SPILL CURB FROM STEP 2

PLACE OVERLAY MEETING FACE OF NEW SPILL CURB WITH SAW CUT BOUNDARY





NOTE: LIMITS ARE MARKED WITH WHITE PAINT ON PAVEMENT

TASK ORDER 30, LOCATION 3 5363 STILLWATER COURT



BEGIN REMOVE AND REPLACE WITH 24" CURB AND SPILL GUTTER, MATCH EXISTING ELEVATION

REMOVE AND REPLACE 24" CURB AND SPILL GUTTER, 2" INCHES HIGHER THAN EXISTING ELEVATION, 5 LF FROM BEGINNING

REMOVE AND REPLACE 24" CURB AND SPILL GUTTER, 6" INCHES HIGHER THAN EXISTING ELEVATION, 16 LF FROM BEGINNING

REMOVE AND REPLACE 24" CURB AND SPILL GUTTER, 5" INCHES HIGHER THAN EXISTING ELEVATION, 40 LF FROM BEGINNING

REMOVE AND REPLACE 24" CURB AND SPILL GUTTER, 4" INCHES HIGHER THAN EXISTING ELEVATION, 60 LF FROM BEGINNING

REMOVE AND REPLACE 24" CURB AND SPILL GUTTER, 6" INCHES HIGHER THAN EXISTING ELEVATION, 85 LF FROM BEGINNING. END SPILL GUTTER SECTION

SAW CUT AND MILL 4 FOOT WIDE STRIP 1-1/2" DEEP AT SAW CUT EDGE, 70 SY

LEVELING COURSE 19mm TO WITHIN 1-1/2" TO MATCH REPLACED GUTTER ELEVATION, AVG DEPTH =3", 200 SY
OVERLAY COURSE, 9.5mm ASPHALT, 1-1/2"

END REMOVE AND REPLACE 24" CURB AND GUTTER, MATCH EXISTING ELEVATION, 120 FEET FROM BEGINNING

18 219 01 024

18 219 01 018

18 219 01 017

STILLWATER CT

6" AC



1. REMOVE AND REPLACE CURB AND GUTTER AT ELEVATIONS DESCRIBED

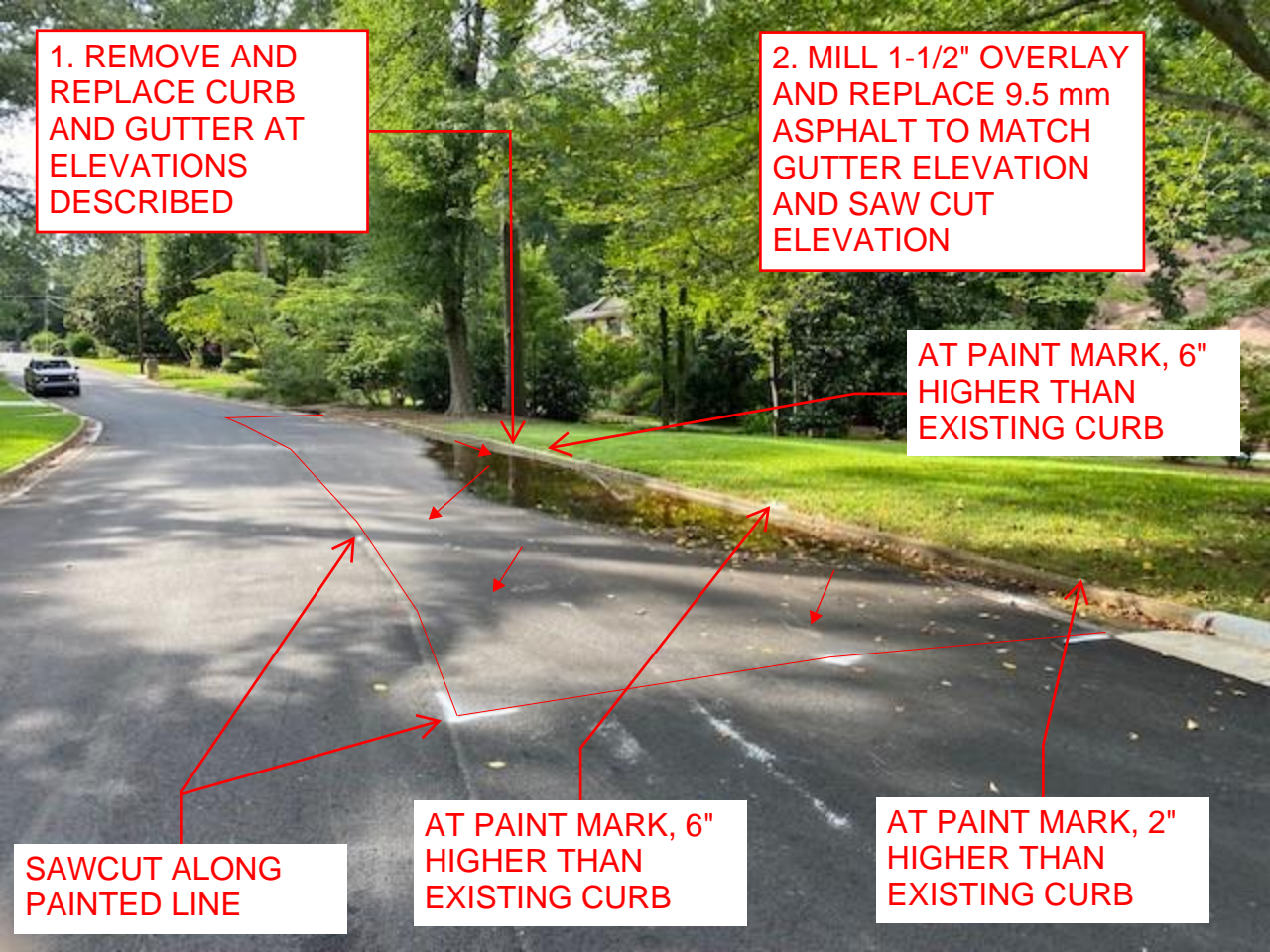
2. MILL 1-1/2" OVERLAY AND REPLACE 9.5 mm ASPHALT TO MATCH GUTTER ELEVATION AND SAW CUT ELEVATION

AT PAINT MARK, 6" HIGHER THAN EXISTING CURB

SAWCUT ALONG PAINTED LINE

AT PAINT MARK, 6" HIGHER THAN EXISTING CURB

AT PAINT MARK, 2" HIGHER THAN EXISTING CURB





AT PAINT MARK, 6"
HIGHER THAN
EXISTING CURB

1. REMOVE AND
REPLACE CURB
AND GUTTER AT
ELEVATIONS
DESCRIBED

SAWCUT ALONG
PAINTED LINE

2. MILL 1-1/2" OVERLAY
AND REPLACE 9.5 mm
ASPHALT TO MATCH
GUTTER ELEVATION
AND SAW CUT
ELEVATION

